

Fluid-o-Tech magnet drive gear pumps MG200 series



The MG200 series magnet drive gear pumps are compact precision performance pumps for high technology applications. The magnet drive principle provides a totally sealed pump chamber capable of handling a wide range of corrosive liquids with a high degree of safety. The housing of the pump and the internal metal parts are in AISI 316 L stainless steel and the gears are available in PTFE™ or Peek™.

In operation the MG200 series pumps are noiseless, pulsation-free and capable of handling relatively high temperature fluids with low coefficient of expansion.

The principle of the magnetic drive comprises an inner magnet embodied in the pump and connected to the driving gear, and an outer magnet connected to the motor shaft.

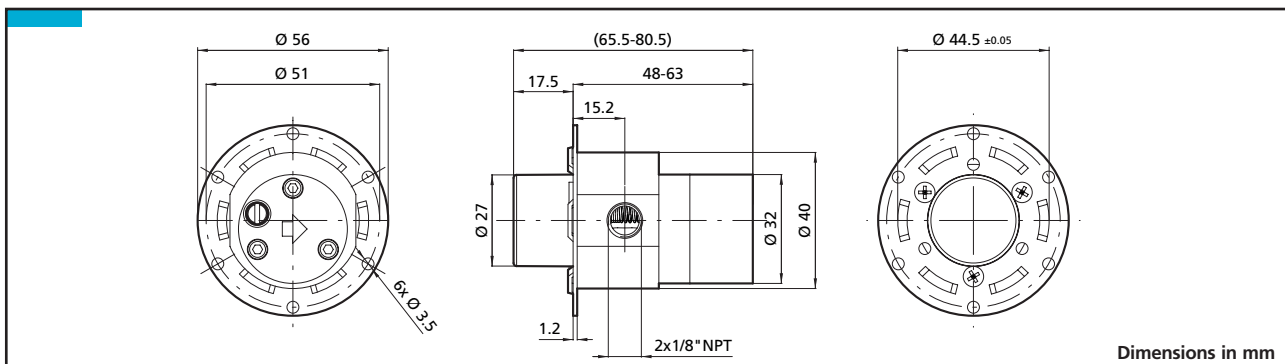
The pole-to-pole alignment of the two magnets provides the driving motion to the pump.

Decoupling will occur when the pump load exceeds the maximum coupling torque provided by the alignment of the two magnets.



- 1/8" GAS or NPT ports
- Relief valve available upon request
- NSF listed pumps for potable water

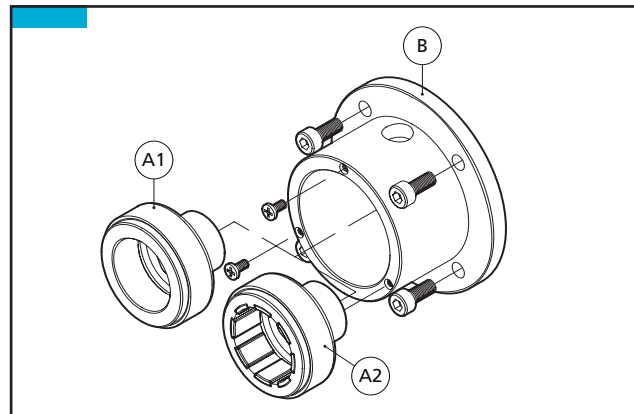
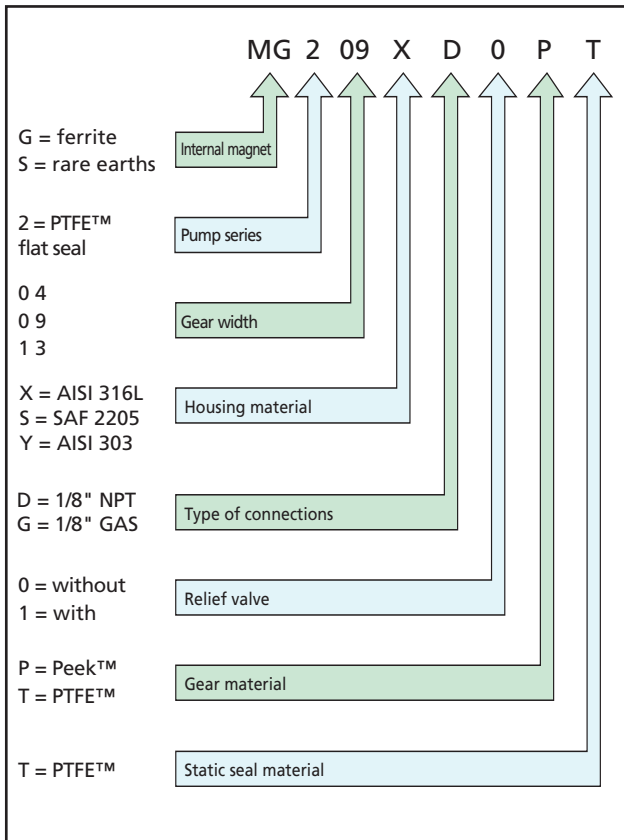
Composition materials			Technical information	
Housing	Gear	Seal	Temperature range	Max system pressure
316 L SS	PTFE™	PTFE™	-45 to +50 °C / -49 to +122 °F	20 bar/290 psi
316 L SS	Peek™	PTFE™	-45 to +120 °C / -49 to +248 °F	20 bar/290 psi



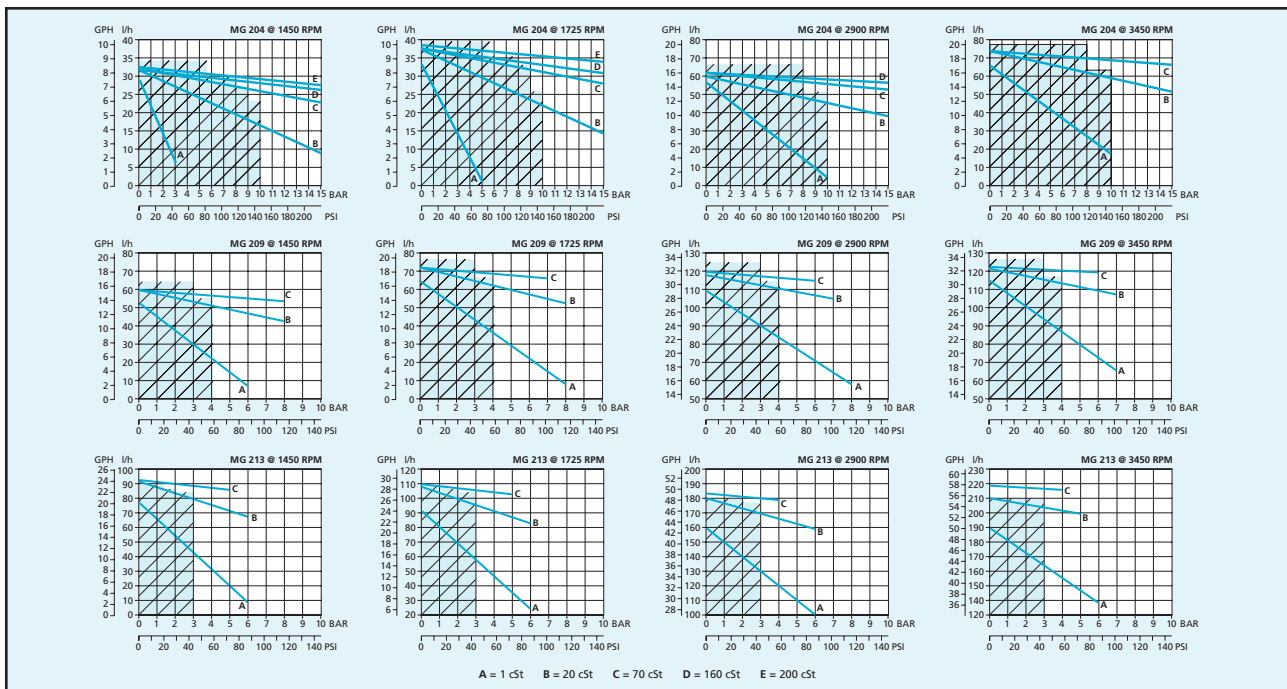
Main applications

- Medical and surgical equipment
- Hemodialysis apparatus
- Laser apparatus
- Lubrication
- Ink-jet printing systems
- Cooling systems
- Laboratory instrumentation
- Water purification and ultra-filtration
- Sampling
- Food processing equipment

Fluid-o-Tech magnet drive gear pumps MG200 series



Pos.	Description	Features	Code
A1	Ferrite driving magnet	6 mm bore	MGAF06S
		9 mm bore	MGAF09S
		11 mm bore	MGAF11S
A2	Rare earths driving magnet	6 mm bore	MGAS06S
		9 mm bore	MGAS09S
		11 mm bore	MGAS11S
A1 + B	Adapter kit with ferrite driving magnet	M48 motor	MGBF48S
		M56 motor	MGBF56S
		M63 motor	MGBF63S
A2 + B	Adapter kit with rare earths driving magnet	M48 motor	MGBS48S
		M56 motor	MGBS56S
		M63 motor	MGBS63S



Note: Performance beyond the broken line zone are reached with the rare earths magnets. Characteristics with water at 20 °C (68 °F) and without relief valve, max vacuum 724 mmHg. Use filter before pump inlet not larger than 10 micron. Pump weight: 400 g (0,90 Lbs). Temperature requirements different from ambient temperature must be mentioned on the order. Different materials are available upon request.

Fluid-o-Tech reserves the right to alter the specifications indicated in this catalogue at any time and without prior notice.

MG2 – 03/09 Ed.

Fluid-o-Tech srl
Via Leonardo da Vinci, 40
20094 Corsico, Milano, Italy
Tel. +39 02 8917071
Fax +39 02 89170799

Fluid-o-Tech Int'l Inc.
161 Atwater St.,
Plantsville CT (USA) 06479
Tel. +1 (860) 276-9270
Fax +1 (860) 620-0193

Fluid-o-Tech Int'l Inc. Japan
203, 2-17-19, Ebara, Shinagawa
Tokyo 142-0063, Japan
Tel. +81 (0) (3) 3783-9660
Fax +81 (0) (3) 3783-9661

Fluid-o-Tech Asia (Beijing) Co., Ltd
Jingwei Industrial Zone,
Beifang Huairou, Beijing, 101400, PRC
Tel. +86 (0) (10) 61684650
Fax +86 (0) (10) 61684651